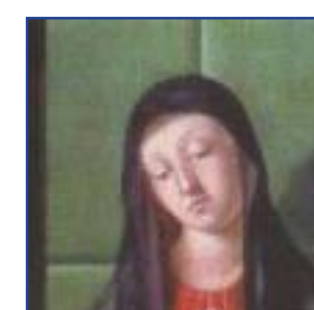


# BEWEB • Ecclesiastical Property on the Web

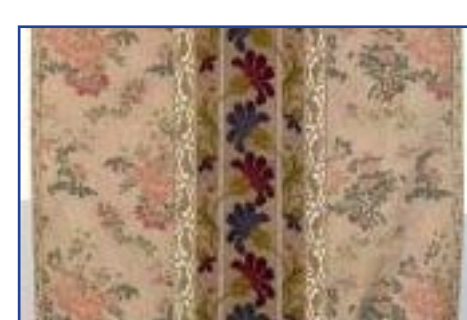
<http://www.chiesacattolica.it/beweb>

The site offers a selection of the computer-based catalogues of cultural assets drawn up by the Italian dioceses from 1997 with the Ministry of Cultural Heritage and Activities. However, these images and the information presented on the web are only a small sample of the records in the central data bank organised by the National Office for ecclesiastical cultural assets and the IT service of the Italian Episcopal Conference, which coordinates the activities of the individual dioceses.



A SITE DEDICATED TO ECCLESIASTICAL ASSETS, given their specific nature, requires equally specific and original characteristics. The name and the logo in themselves constitute a distinguishing sign of the features of the cultural heritage presented. The Home Page sets out the means for accessing the archives of single dioceses as also for exploiting the database's resources in order to perform nationwide research. The site allows the navigator to choose and search for cultural assets in a very simple and intuitive manner.

The particular nature of ecclesiastical cultural assets in relation to liturgy, the Holy Scriptures, theology and iconography is given great prominence in the thematic navigation. Meanings, symbols and contents are presented in the form of subject paths to guide the navigator.



At any moment the search criteria used can be displayed, supplemented or limited in order to enhance the search specifications or increase the sample of assets. The works found may be ordered on the basis of various criteria by using the information in the various fields, or alternatively they may be ordered by epoch, author, or diocese etc.



One of the fundamental features of BeWeb is the availability of a glossary to illustrate some recurrent themes whose meaning is not immediately obvious or commonly used. Pastoral activity as well as cultural may also utilise this innovative tool. Thus the catechism and scho-

lastic activity can acquire a new facility. The choice of the images for a meeting is now much simpler while cataloguing is also assisted. The implementation of the data bank and the site will take place gradually according to the pace of the cataloguing by the dioceses, whose role in the operation

remains central. Through the site's various functions each diocese can produce its own virtual museum or its own thematic paths by capitalising upon the works of art and cultural assets in the territory and the tradition of the local church.



**BEWEB**

The site was produced by  
**Giovanni Silvestri**  
System Manager for the IT Service of the CEI  
**Nuccio Castorina**  
System Manager for IDS

The functions and contents  
were developed by  
**Gianmatteo Caputo**  
Project Manager

Technological development  
is entrusted to  
**Maurizio De Francesco**  
Project Leader and Database Administrator  
**Massimo Currò**  
Application Designer and Web Architecture  
**Bianca Di Pietro**  
Application Developer  
**Giampiero Neri**  
Web Design

The images are protected by  
watermark developed by  
**Salvatore Giovinnazzo**

The data bank accessible  
through BeweB is organised  
by the National Office for  
Ecclesiastical Cultural Assets  
**Giancarlo Santi**  
Director of the national office  
for cultural assets  
**Laura Gavazzi**  
Manager with responsibility for  
the national ecclesiastical catalogue

The Ecclesiastical Cataloguing  
Project is the work of the Italian  
dioceses in cooperation with  
**Matteo Panzeri**  
Scientific consultant for the national  
ecclesiastical catalogue  
**Francesca D'Agnelli**  
Consultant for data control and management

The records produced in the  
framework of the Ecclesiastical  
Project comply with the standards of  
the Central Institute for Cataloguing  
and Documentation.

The web catalogue is also used  
by the Carabinieri Unit for the  
Safeguarding of Artistic Heritage.

**PROGETTO ECUMENE**

BEWEB • Ecclesiastical Property on the Web

